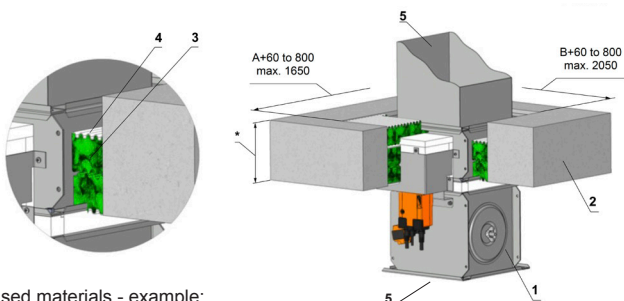


FDMA EI 90 S (Slab - Fire Batt Fire stop)



Used materials - example:

- 3 Hilti CFS-CT B 1S 140/50
- 4 Hilti CFS-CT

Position:

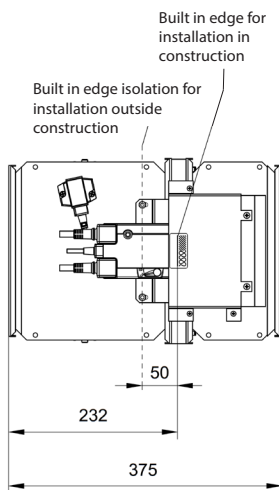
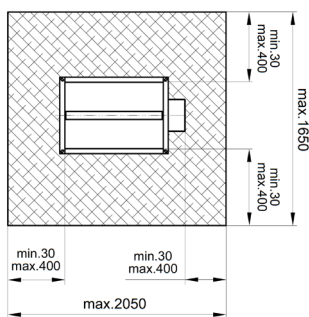
- 1 Fire damper
- 2 Solid ceiling construction
- 3 Fire resistant board
- 4 Fire stop coating thickness 1mm
- 5 DW144 standard duct supported to flanged breakaway joint on both front and rear of damper

FDMA aerated slab minimum thickness is 125mm, solid slab 110mm

FDMA can be installed with blade axis positioned either vertically or horizontally and with the actuator positioned at 0°, 90° or 270°, but not at 180°.

Fire batt installed as manufactures installation details

Builders work opening

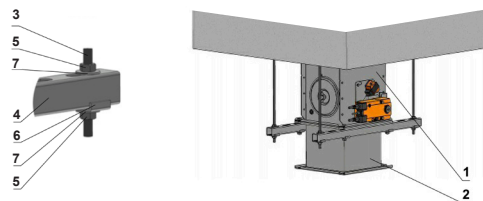


Fire Batt sizes can be rotated

For larger format dampers, potentially two sprig cut-outs are required in fire batt (only for dampers with mechanical controls).

Built in edge signifies depth of damper insertion into wall

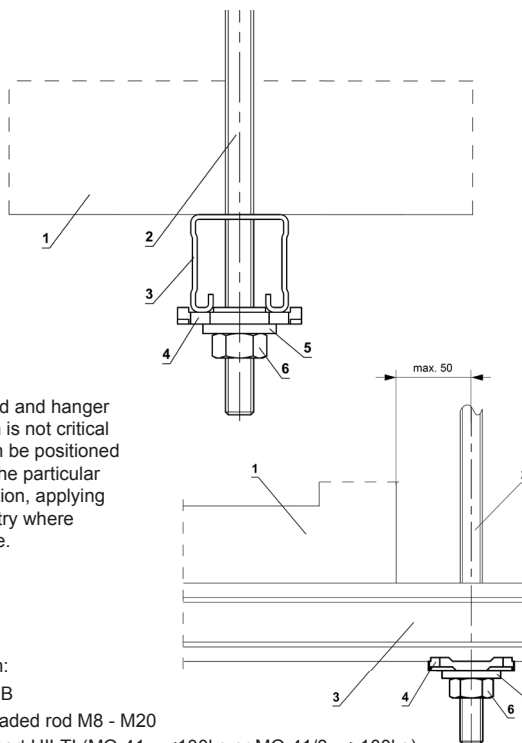
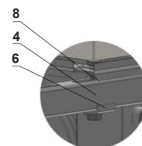
Actuating mechanism can be installed above or below slab. Exact damper supporting method to be designed to suit each individual application by the ductwork specialist contractor.



Examples of using materials: HILTI, SIKLA, MÜPRO etc.

Position:

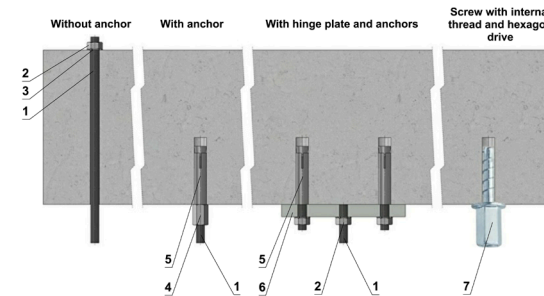
- 1 Fire damper
- 2 DW144 standard duct
- 3 Threaded rod
- 4 Mounting rail
- 5 Nut
- 6 U - Washer
- 7 Washer
- 8 Screw connection



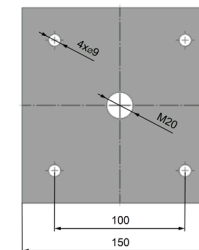
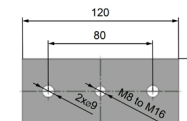
Position:

- 1 FDMB
- 2 Threaded rod M8 - M20
- 3 Support HILTI (MQ-41 = <100kg or MQ-41/3 = >100kg)
- 4 Bored plate HILTI MQZ-L
- 5 Washer for M8 - M20
- 6 Nut M8 - M20

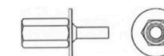
Advice provided by a fixing specialist contractor takes precedence.



Hinge plates



Screw with internal thread and hexagon drive



Load capacities of threaded hanger rods F [N] at the required fire resistance 90 minutes

Size	As [mm]	Weight G [kg]	
		for 1 piece	for 1 pair
M8	36.6	22	44
M10	58	35	70
M12	84.3	52	104
M14	115	70	140
M16	157	96	192
M18	192	117	234
M20	245	150	300

Position:

- 1 Threaded rod M8 - M20
- 2 Nut
- 3 Washer
- 4 Coupling nut
- 5 Anchor
- 6 Hinge plate - min. thickness 10mm
- 7 Concrete screw tested for fire resistance R30-R90, max. tension up to 0.75KN (length 35mm)

Drop rod diameter is based on damper weight, see full Damper TPM for further technical details or contact help@Mandik.co.uk. Mandik reserves the right to update this information without prior notice.

		Mandik UK Ltd www.mandik.co.uk Office: 0117 4526376	Redwood House Brotherswood Court Great Park Road Almondsbury Bristol BS32 4QW
		CE certified acc. to EN 15650 Tested in accordance with EN 1366-2	
Title: FDMA - Slab/Fire Batt		Size: (min-max) 180x180 - 1600x1000	
Classification: EI 90 (ho i<->o) S		Date: 27/10/2021	
Drawing No: 0000-0000-018 Rev 5		Illustrated: GP	Approved: MF
Intellectual property of MANDIK Ltd. Unauthorised use shall be punishable by law			