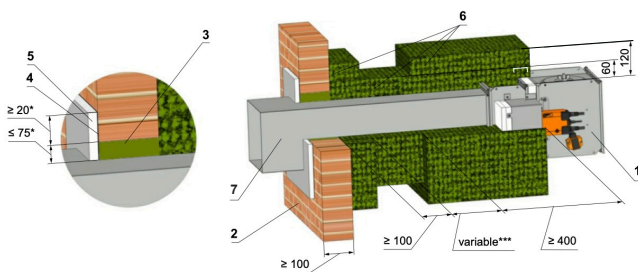
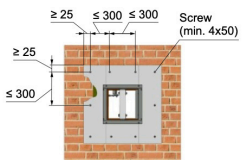


FDMA EI 90 S (Remote solid wall construction)



* Around the perimeter



Screws has to be fixed in wall/ceiling construction. (If it is needed use steel bracket).

Position:

- 1 Fire damper
- 2 Solid wall construction
- 3 Mineral stone wool min. density 140 kg/m³
- 4 Fire protection mastic min. thickness 1mm
- 5 Cement lime plate min. thickness 15mm (min. density 870 kg/m³)
- 6 Stone wool bound with use of an organic resin with crushed stone as a refrigerant, min. density 300 kg/m³ and min. thickness 60 mm
- 7 Ductwork connected with breakaway joints

Used materials - example:

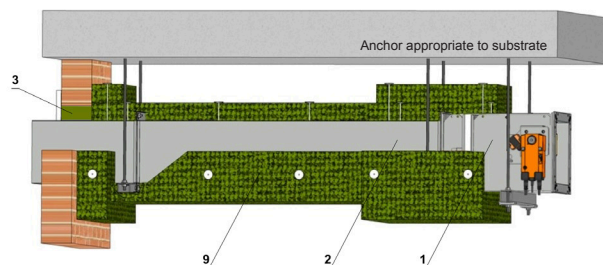
- 3 Promapyr. Rockwool Steprock HD. Hilti CFS-CT C 1S 140/50
- 4 Promastop - P, K, Hilti CFS-CT
- 5 Promatect - H
- 6 Rockwool Wired Mat 105 th. 60mm

** Stuffing box, fire protection mastic, cement lime plate and insulation materials can be replaced by another approved fire sealing system for damper installation with equivalent material properties.

*** Depends on the distance of the flap from the construction, when the maximum distance from the construct is not limited and according to EN 15882-2 must use the required number of supports according to 1366-1:2014.

For builders work opening (BWO) please refer to ductwork manufacturers tested penetration detail.

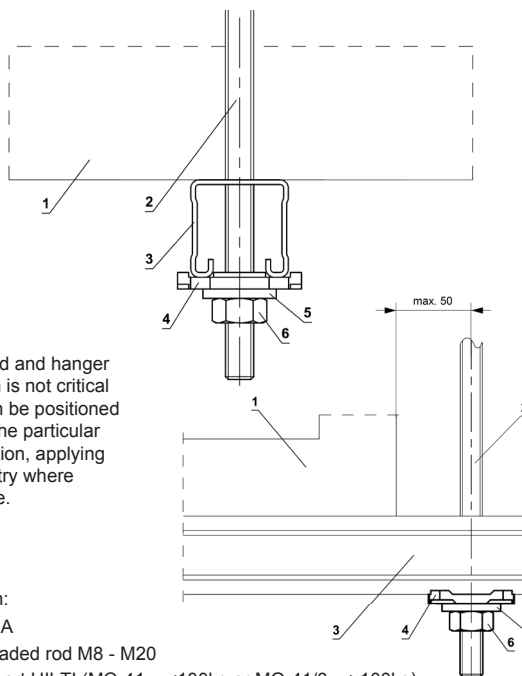
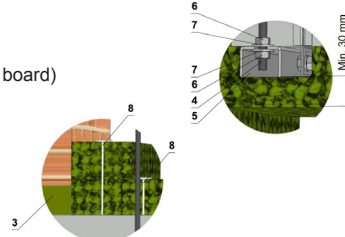
Insulation to be installed with manufacturers installation practices taking priority.



Position:

- 1 Fire damper
- 2 BS EN 1366-1 fire rated duct
- 3 Soft padding (stone wool + fire board)
- 4 Threaded rod
- 5 Mounting rail
- 6 Nut
- 7 Washer
- 8 Weld pin
- 9 Insulation

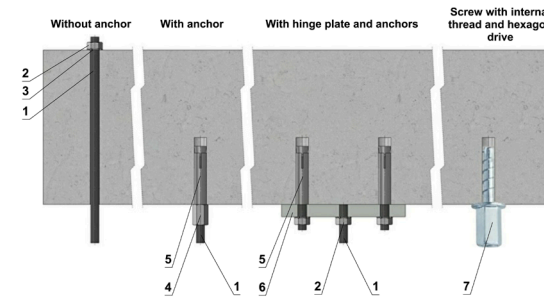
Insulation layers on the duct



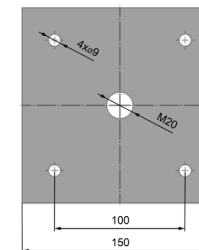
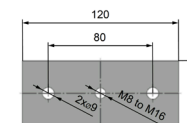
Position:

- 1 FDMA
- 2 Threaded rod M8 - M20
- 3 Support HILTI (MQ-41 = <100kg or MQ-41/3 = >100kg)
- 4 Bored plate HILTI MQZ-L
- 5 Washer for M8 - M20
- 6 Nut M8 - M20

Advice provided by a fixing specialist contractor takes precedence.



Hinge plates



Screw with internal thread and hexagon drive



Load capacities of threaded hanger rods F [N] at the required fire resistance 90 minutes

| Size | A _s [mm] | Weight G [kg] | |
|------|---------------------|---------------|------------|
| | | for 1 piece | for 1 pair |
| M8 | 36.6 | 22 | 44 |
| M10 | 58 | 35 | 70 |
| M12 | 84.3 | 52 | 104 |
| M14 | 115 | 70 | 140 |
| M16 | 157 | 96 | 192 |
| M18 | 192 | 117 | 234 |
| M20 | 245 | 150 | 300 |

Position:

- 1 Threaded rod M8 - M20
- 2 Nut
- 3 Washer
- 4 Coupling nut
- 5 Anchor
- 6 Hinge plate - min. thickness 10mm
- 7 Concrete screw tested for fire resistance R30-R90, max. tension up to 0.75KN (length 35mm)

Drop rod diameter is based on damper weight, see full Damper TPM for further technical details or contact help@Mandik.co.uk. Mandik reserves the right to update this information without prior notice.

| | | | |
|--|--|--|---|
| | | Mandik UK Ltd www.mandik.co.uk Office: 0117 4526376 | Redwood House Brotherswood Court Great Park Road Almondsbury Bristol BS32 4QW |
| | | CE certified acc. to EN 15650 Tested in accordance with EN 1366-2 | |
| Title: FDMA - Remote solid wall | | Size: (min-max) 180x180 - 1600x1000 | |
| Classification: EI 90 (ve i<->o) S | | Date: 11/10/21 | |
| Drawing No: 0000-0000-037 Rev 2 | | Illustrated: GP | Approved: MF |
| Intellectual property of MANDIK Ltd. Unauthorised use shall be punishable by law | | | |